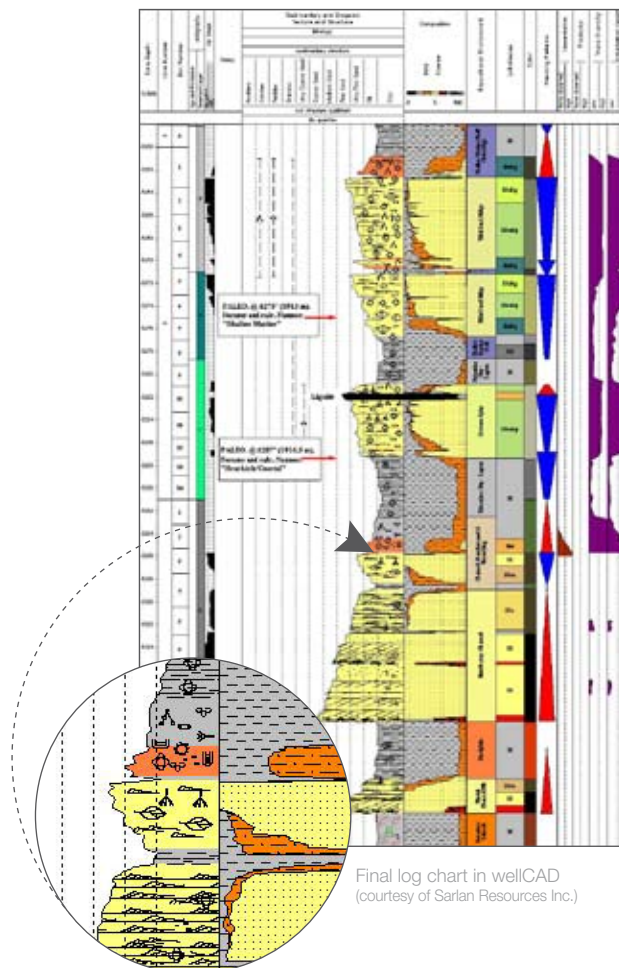


WellCAD CoreCAD

CoreCAD is an interactive digital core description application based on the comprehensive well data display capability of the WellCAD package. Developed by and for geologists, the software offers a dedicated workspace with zoom & snap options, workflow templates, and fast data entry. These tools will allow the geologist to input core descriptions faster and transformed directly into digital format.

As soon as data is inserted into the CoreCAD workspace the underlying WellCAD composite log chart and its final layout is updated in real time.

CoreCAD allows the setting up of customised workflow schemes and layout templates in order to handle clastic, carbonate and outcrop descriptions. CoreCAD is available both as an add-on to the WellCAD package for PC and as a standalone application for a pocket PC.

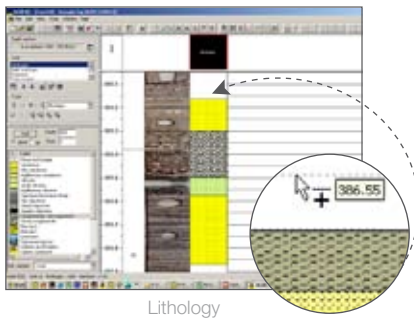


- Allows easy and efficient digital and graphical description of cores
- All parameters described graphically are stored as real digital data – ready to export
- Multiple depth system management
- Import core photographs
- Import hand drafted core descriptions, digitise the data or integrate them into composite log charts
- Fully customisable system for easy and quick creation of all core description data types from biostratigraphy, to diagenetic minerals & depositional subenvironment

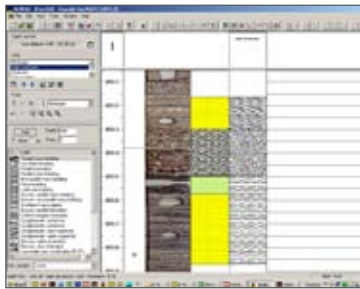
CoreCAD workspace

Typical clastic core description workflow

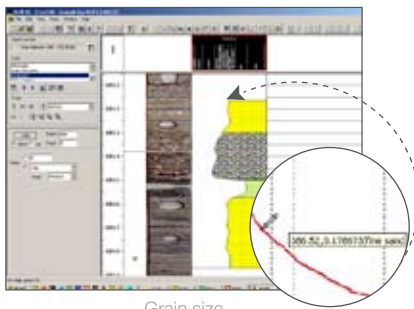
The CoreCAD workspace provides an interactive environment to describe user defined depth intervals (e.g. boxes or outcrops) in detail. The final core description chart is updated in real time with data acquired in CoreCAD.



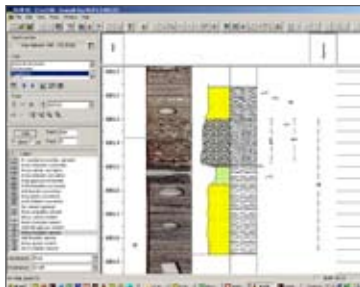
Lithology



Sedimentary structures



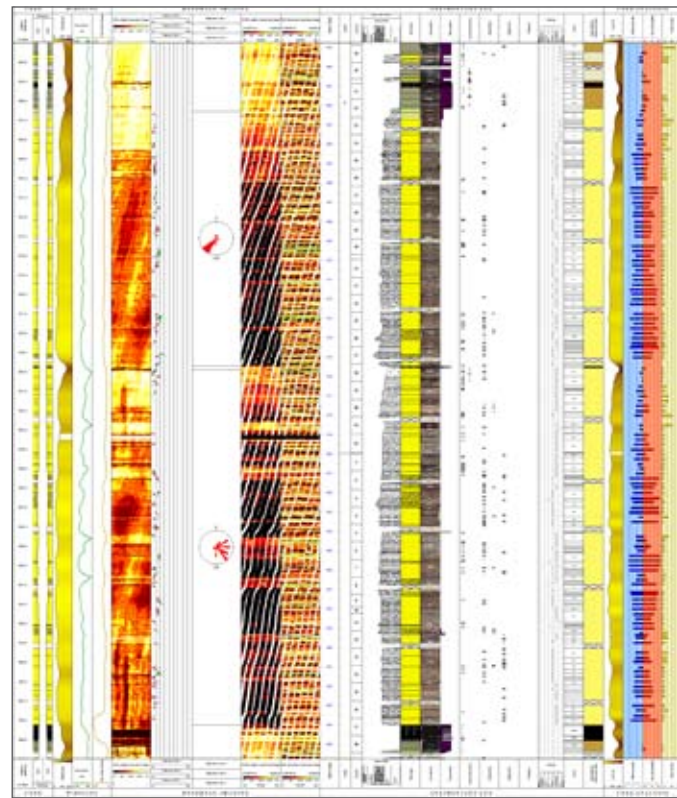
Grain size



Accessories-fossils-diagenesis-...

Core description workflow, symbol libraries can be customized to meet the reservoir specific requirements and the sedimentologist's ways of working.

Each parameter is described in its own workspace. All necessary data management and workspace layout control are combined in a toolbar. The toolbar content adapts automatically to the parameter being described.



Final log chart in wellCAD (courtesy of PanTerra Geoconsultant)

Final composite log document

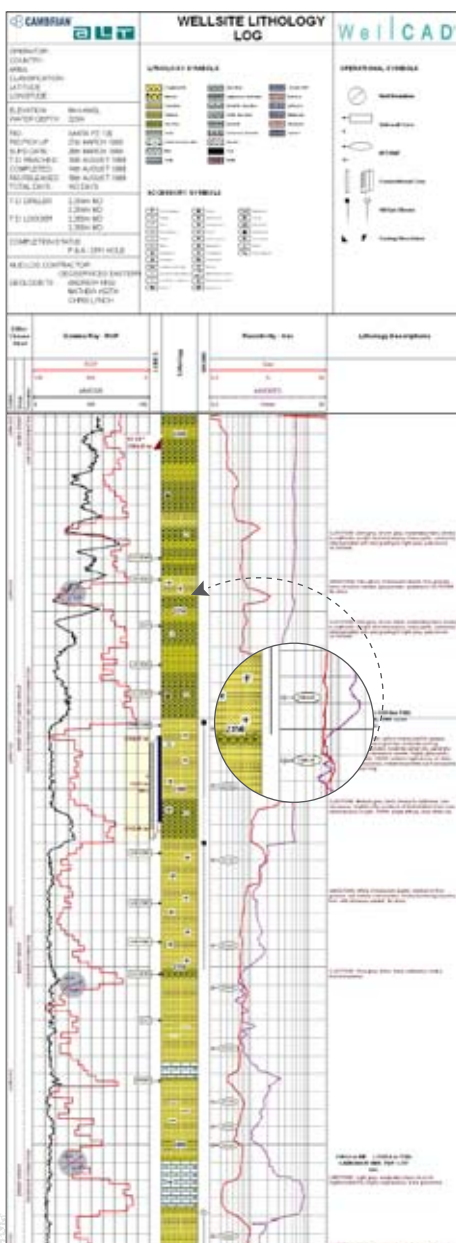
Further data as borehole images, wire line data, sedimentological core information and conventional core analysis may be integrated to create a Well composite log. Data sets can be accurately calibrated and correlated at high-resolution scale (lithofacies interpretation and extrapolation).

The specifications are not contractual and are subject to modification without notice.

CoreCAD Wellsite

Engineering data can be inserted either interactively on the document or using the built-in symbols editor. The data may be displayed in the document and/or in a spreadsheet section in the document header.

The data are handled using specific display and settings (Plugs , Bit Data , Casing Data, Date marker, Orientation Data, Production liner, Drill Stem Test, RFT/MDT/Pressure, Conventional and sidewall cores, Mud parameters, shows)



Depth	Rate	Test	Pressure	Flow Rate	Rating
4151.70	1	1	1002.78		Default
4151.40	1	2	1002.78		Default
4151.10	1	3	1002.78		Default
4150.80	1	4	1002.78		Default
4150.50	1	5	1002.78		Default
4150.20	1	6	1002.78		Default
4149.90	1	7	1002.78		Default
4149.60	1	8	1002.78		Default
4149.30	1	9	1002.78		Default
4149.00	1	10	1002.78		Default
4148.70	1	11	1002.78		Default
4148.40	1	12	1002.78		Default
4148.10	1	13	1002.78		Default
4147.80	1	14	1002.78		Default
4147.50	1	15	1002.78		Default
4147.20	1	16	1002.78		Default
4146.90	1	17	1002.78		Default
4146.60	1	18	1002.78		Default
4146.30	1	19	1002.78		Default
4146.00	1	20	1002.78		Default

- Plugs
- Bit data
- Casing data
- Date marker
- Orientation data
- Production liner
- Drill Stem test
- RFT/MDT/pressure
- Conventional and sidewall cores
- Mud parameters
- Shows

The specifications are not contractual and are subject to modification without notice.